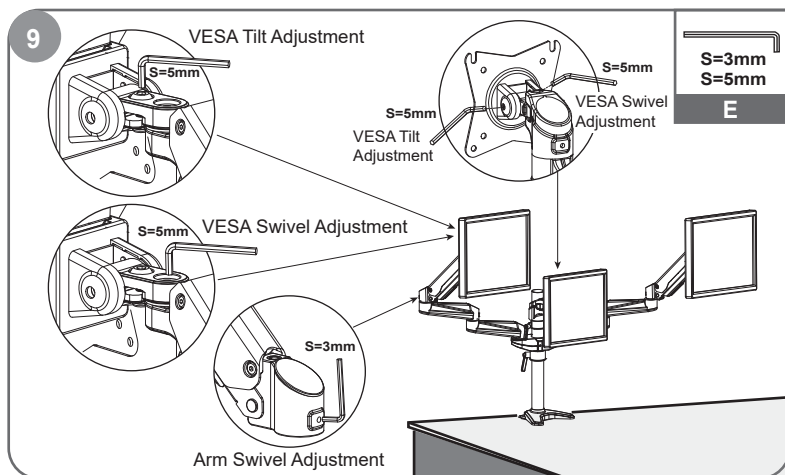
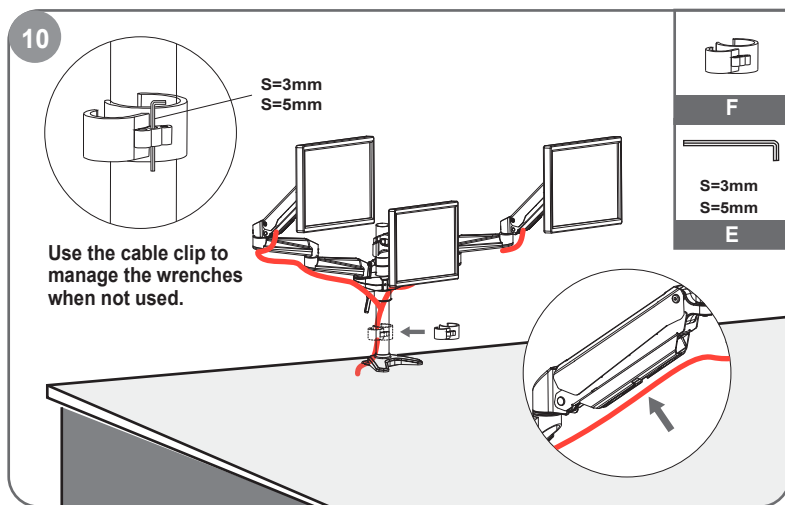


## Tilt & Swivel Adjustment



Tighten the bolt with the Allen Key to make the tilt and swivel adjustment.

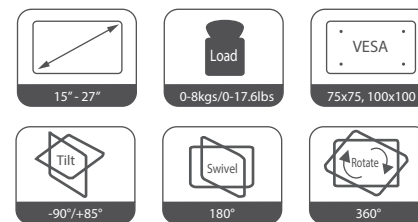
## Cable Management Installation



Organize cables with cable management clips along the pole.

## Gas Spring Aluminum LCD Monitor Desk Mount

# DEVO



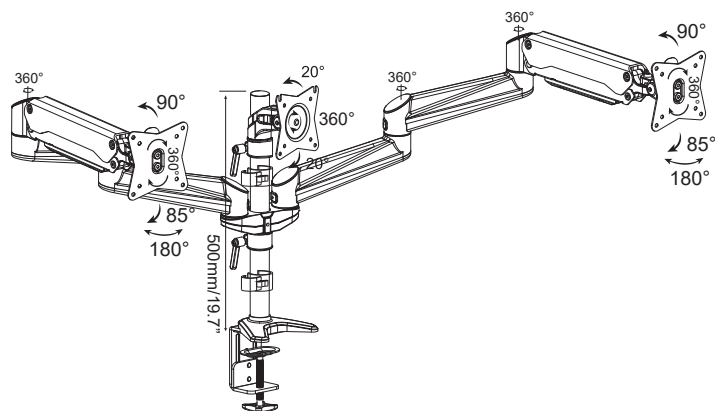
## Installation INSTRUCTIONS

## WARNING STATEMENTS

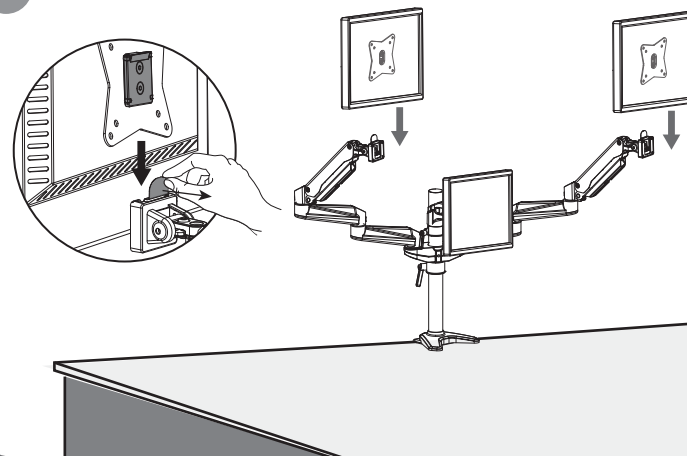
### Warning

- ⚠ Prior to the installation of this product, the installation instruction must be read and completely understood. Failure to do so may result in personal injury, property damage or voiding of manufacturer warranty.
- ⚠ Do not install on a structure that is prone to vibration, or movement. Reinforce the structure as required before installation.
- ⚠ Recommended mounting surfaces: Wooden studs or solid-flat concrete. If the mount is to be installed on any surface other than wooden studs, use suitable hardware.
- ⚠ Pay attention to the weight capacity of the mount. Exceeding the limitation can result in impairment or serious injury and property damage.
- ⚠ Never operate the mount if parts are missing or damaged. Contact your local service center for warranty service.
- ⚠ Do not use this product for any purpose or in any configuration not explicitly specified in this instruction. We hereby disclaim any and all liability for injury or damage arising from incorrect assembly, Incorrect mounting, or incorrect use of this product.

## PRODUCT LINE GRAPH



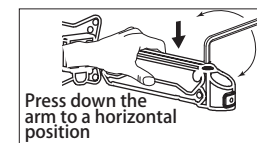
7



Lift the VESA plate along with monitor and put it on head slot.

## Gas Spring Tension Adjustment

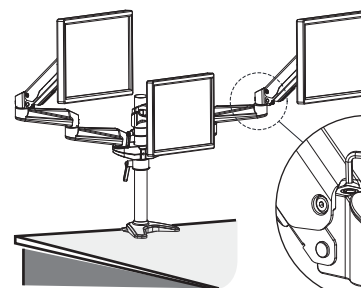
8



Press down the arm to a horizontal position



Be sure to keep the arm in horizontal position during adjustment. Or else, it would be difficult to adjust the mount.

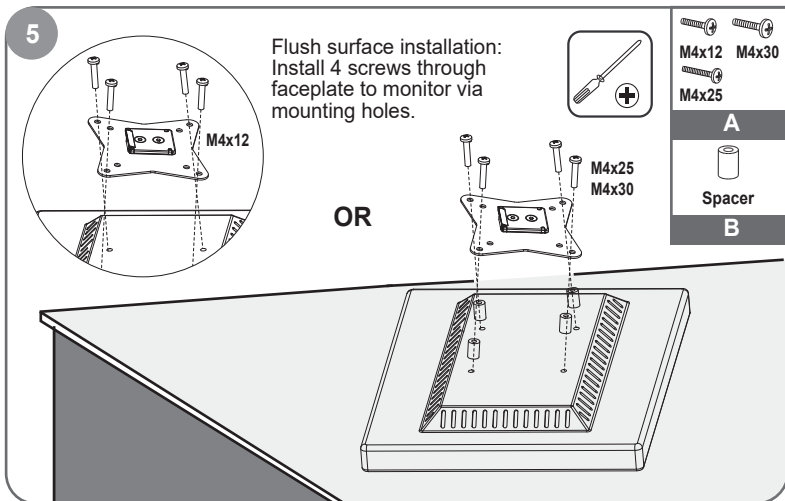


1 turn  $\approx$  1 lbs  $\approx$  0.4kg

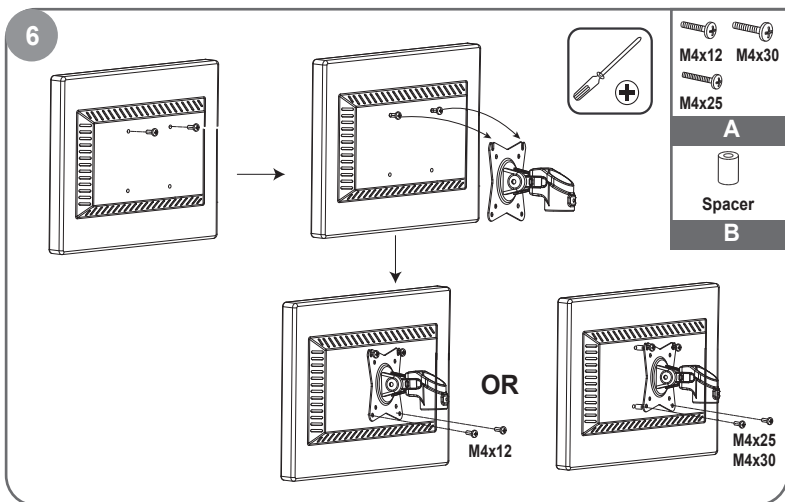
NOTE: Turn clockwise to reduce tension for lighter monitors and counter-clockwise to increase tension for heavier monitors.

Use a hex wrench to adjust the height tension of the gas spring arm, to keep different weight of monitors still at any position.

## Monitor Installation



**Recessed Surface Installation:** Put 4 spacers between faceplate and monitor. Install 4 screws through faceplate, spacers to monitor via mounting holes.

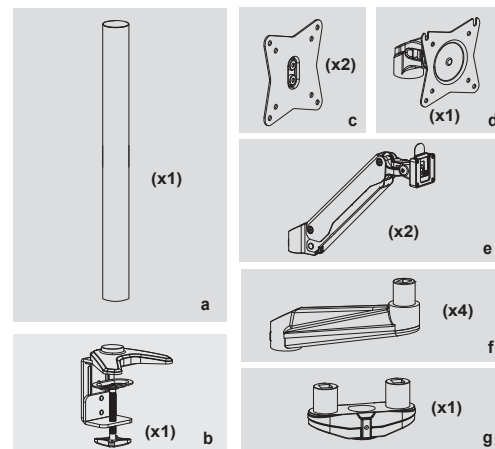


**Flush Surface Installation:** Install 4 screws through faceplate to monitor via mounting holes.

## TOOLS REQUIRED NOT INCLUDED

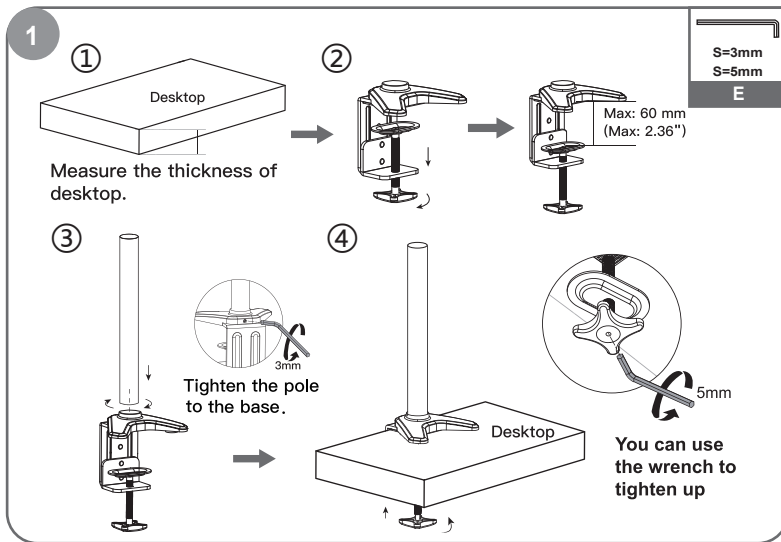


## PARTS INCLUDED

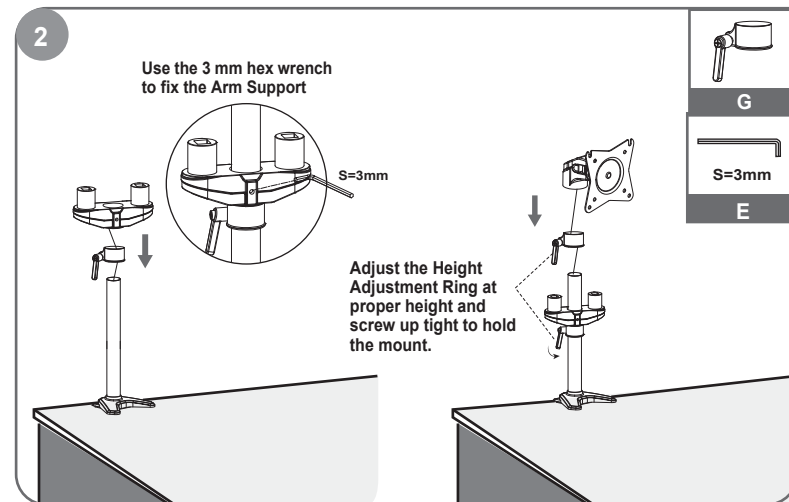


A	M4x12 (x12)	M4x25 (x12)	M4x30 (x12)
B	Spacer (x12)		
C	(x6)		
D	M8x16 (x6)	(x6)	
E	S=3mm (x1)	S=5mm (x1)	
F	(x2)		
G	(x2)		
H	M5x6 (x6)	(x2)	

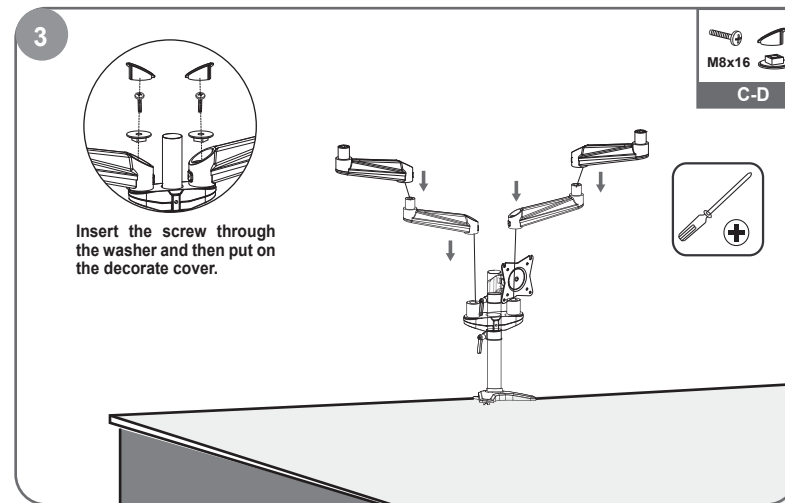
## Clamp Installation Steps



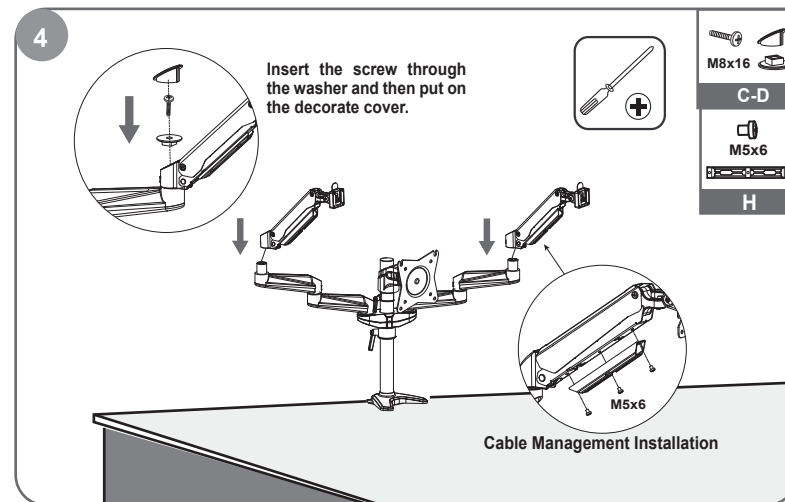
## Arm Installation



Put on Arm Support to the pole above the Height Adjustment Ring.



Put extension arms onto the arm support.



Put spring arm onto the extension arms.