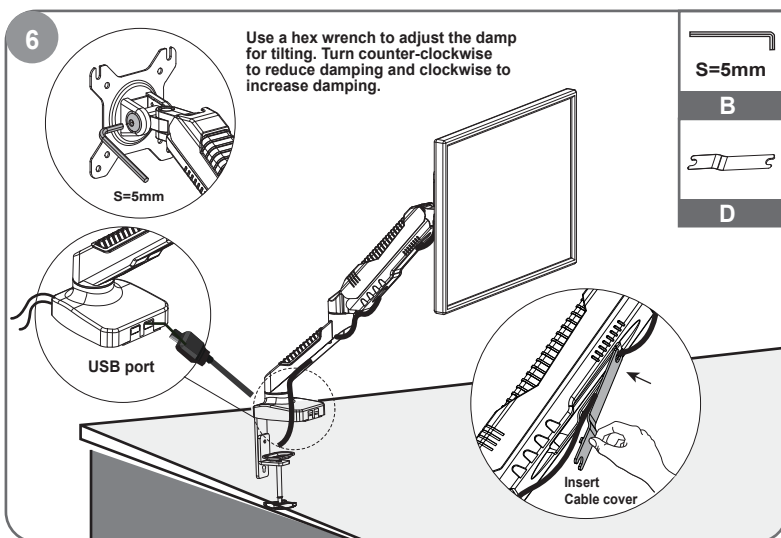


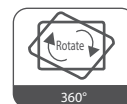
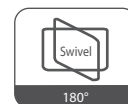
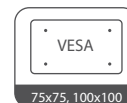
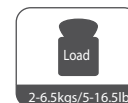
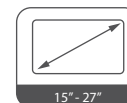
Use a hex wrench to adjust the height tension of the gas spring arm, to keep different weight of monitors still at any position.



Insert cables into cable covers. Leave enough slack of cables at arm joints for full adjustment.

Gas Spring Aluminum LCD Monitor Desk Mount

DEVO



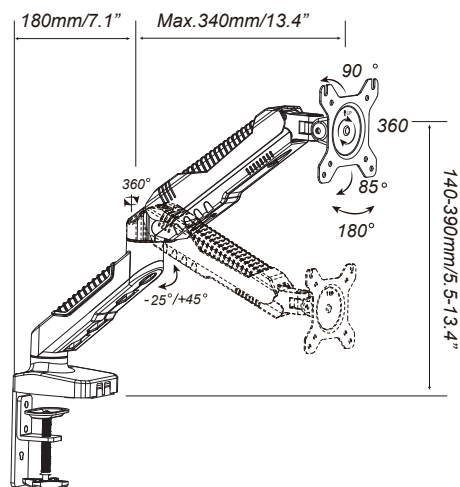
Installation *INSTRUCTIONS*

WARNING STATEMENTS

Warning

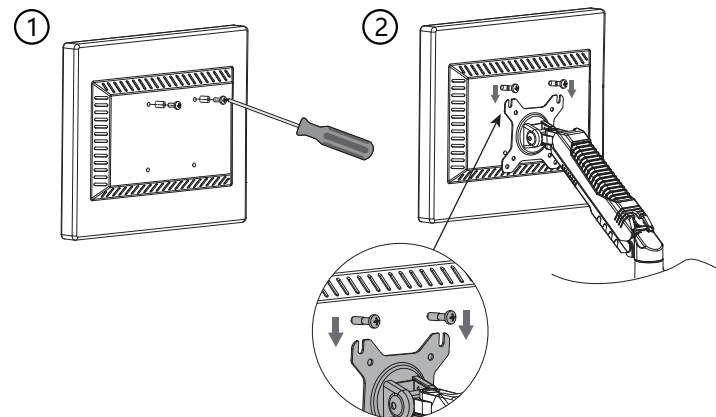
- ⚠ Prior to the installation of this product, the installation instruction must be read and completely understood. Failure to do so may result in personal injury, property damage or voiding of factory warranty.
- ⚠ Do not install on a structure that is prone to vibration, movement or chance of impact. Reinforce the structure as required before installation.
- ⚠ The desk clamp can support a maximum thickness of 9 cm. Confirm the desk edge before installation.
- ⚠ Pay attention to the weight capacity of the mount. Exceeding the limitation can result in function unworkable or even serious personal injury and property damage.
- ⚠ Never operate the mount if parts are missing or damaged. Contact your local service center for warranty service.

PRODUCT LINE GRAPH

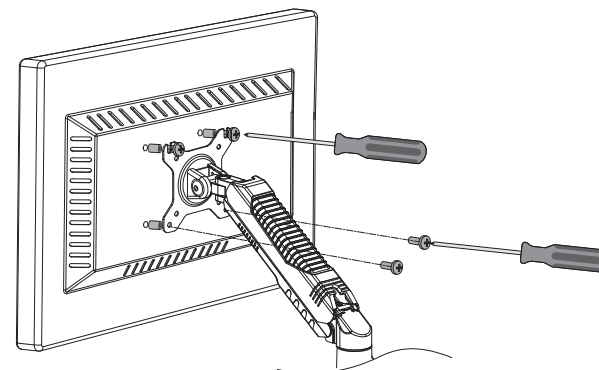


OR
4

Recessed surface installation: Put spacers between headplate and monitor. Install the upper two screws and don't screw them tight. Leave some space and hang the monitor on the head plate.



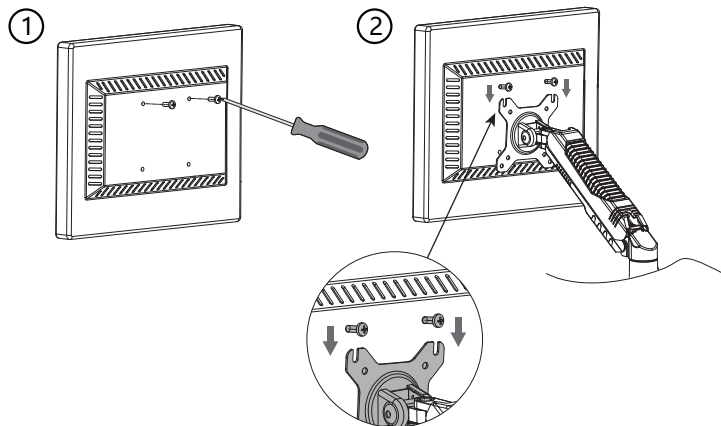
- ③ Recessed surface installation: Put spacers between headplate and monitor. Install the lower two screws and fasten the upper two screws.



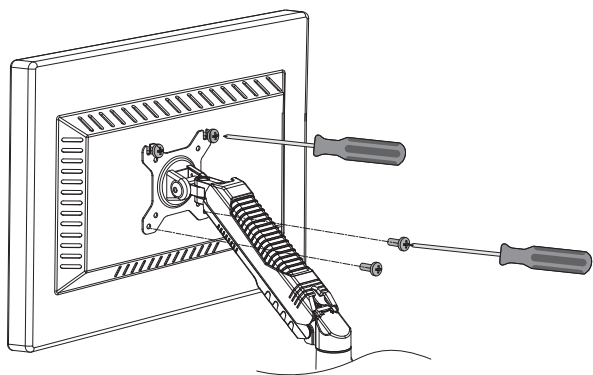
4

Flush surface installation: Install the upper two screws and don't screw them tight. Leave some space and hang the monitor on the head plate.

M4x12
A



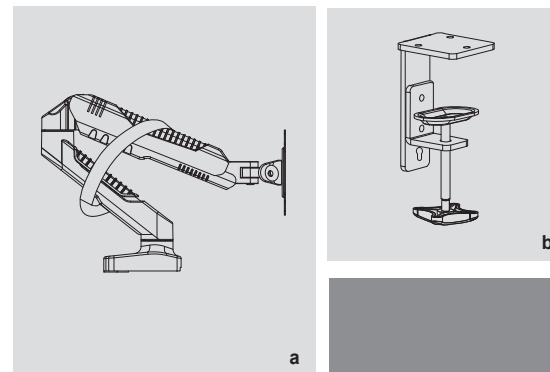
③ Flush surface installation: Install the lower two screws and fasten the upper two screws.













TOOLS REQUIRED NOT INCLUDED

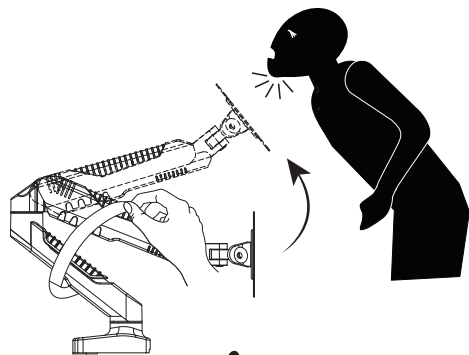


PARTS INCLUDED



A	 M4x12 (x4)	 M4x25 (x4)	 M4x30 (x4)
	 12x5.8x16 (x4)		
B	 S=4mm (x1)	 S=5mm (x1)	 M6x12 (x3)
C	 (x1)	 (x1)	
D	 (x1)		

1

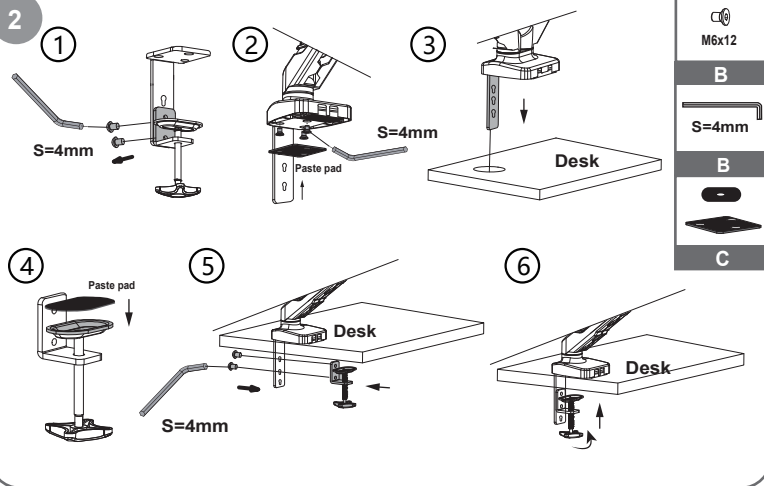


Warning: be careful on the sudden springback of the gas spring arm.

Tear off the cable tie and rebound carefully.

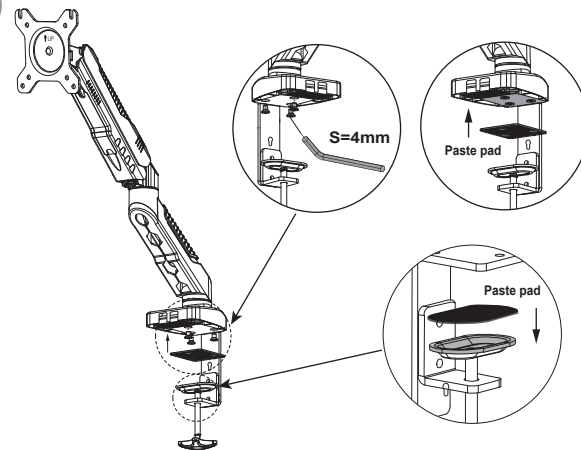
Grommet installation

2



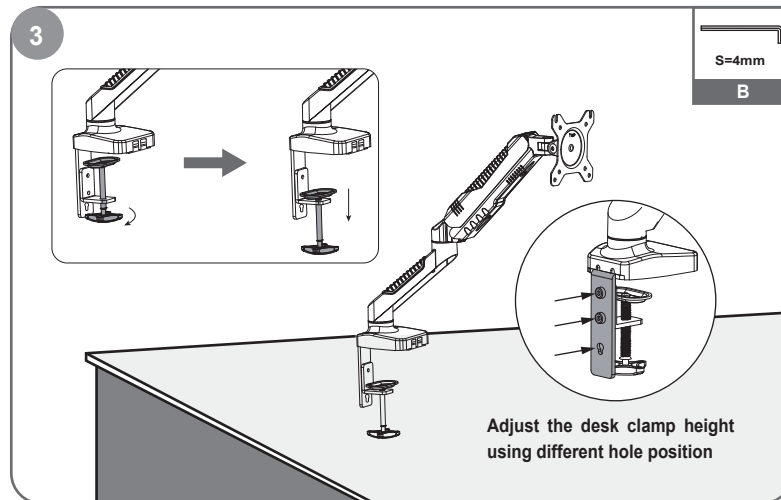
Loosen the two screws on the base, pass it through the hole in the table, and screw in the two screws that have just loosened.

Desk Clamp installation

OR
2

Attach the desk clamp to the aluminum base.

3



Tighten clamp using clamp screw until mount is securely fastened to desk.