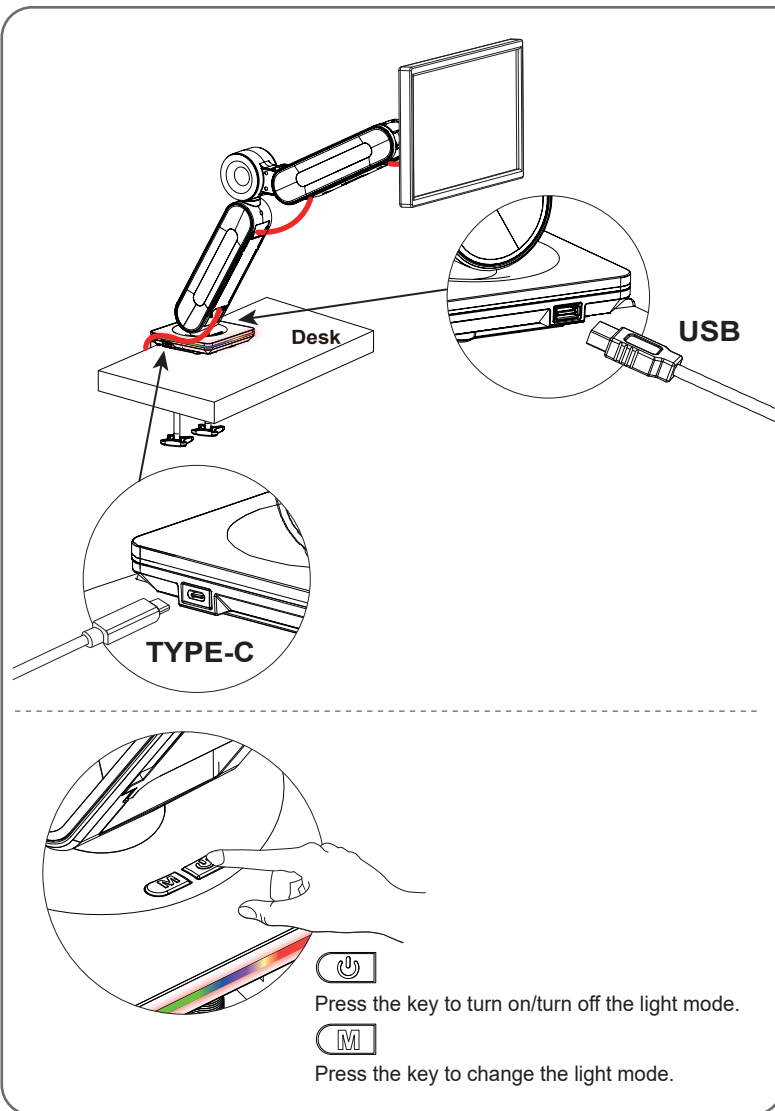
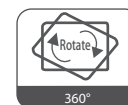
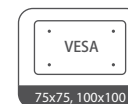
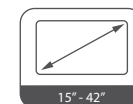


Step 9: Lighting Control



Gas Spring Aluminum LCD Monitor Desk Mounts

DEVO

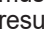






Installation

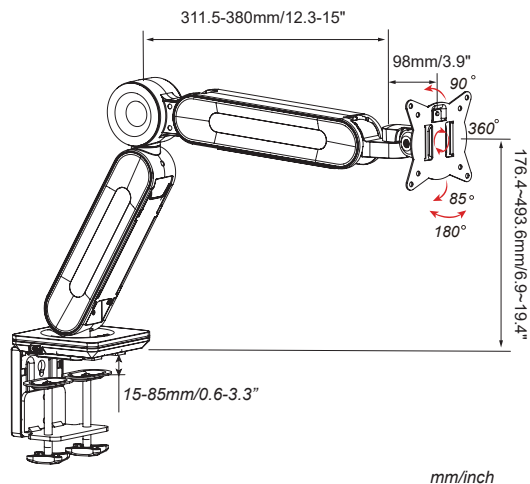
INSTRUCTIONS

WARNING STATEMENTS

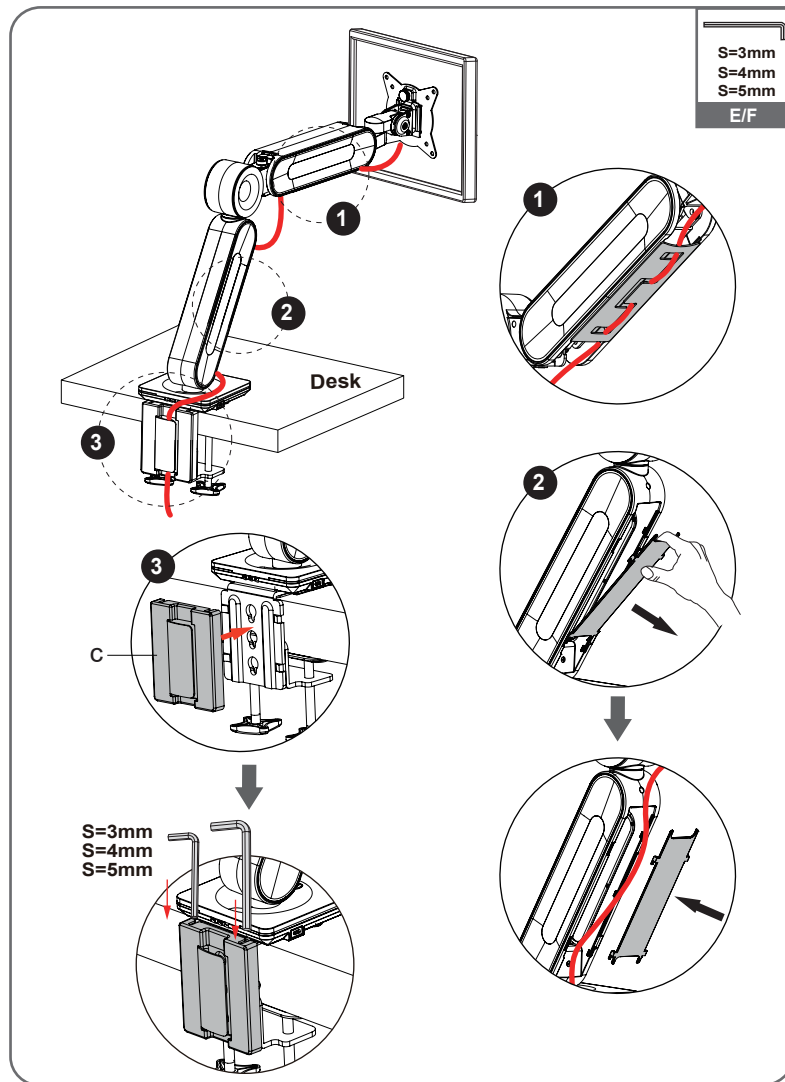
Warning

-  Prior to the installation of this product, the installation instruction must be read and completely understood. Failure to do so may result in personal injury, property damage or voiding of factory warranty.
 -  Do not install on a structure that is prone to vibration, movement or chance of impact. Reinforce the structure as required before installation.
 -  The desk clamp can support a maximum thickness of 8.5 cm. Confirm the desk edge before installation.
 -  Pay attention to the weight capacity of the mount. Exceeding the limitation can result in function unworkable or even serious personal injury and property damage.
 -  Never operate the mount if parts are missing or damaged. Contact your local service center for warranty service.

PRODUCT LINE GRAPH

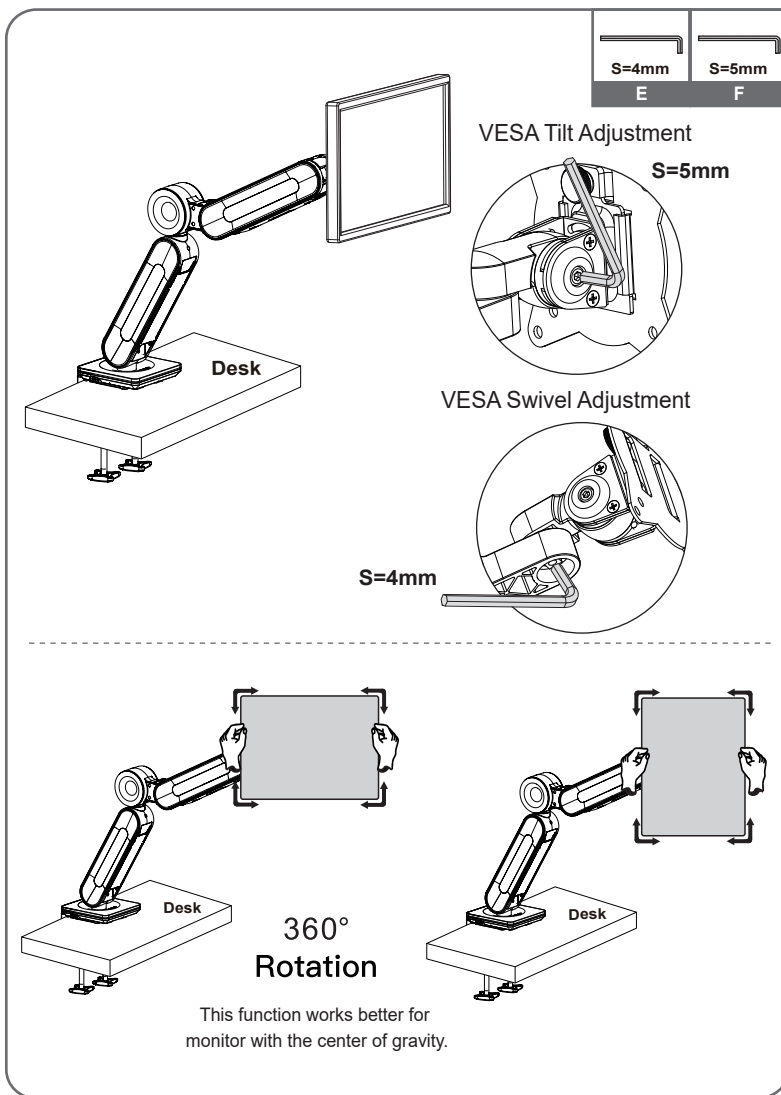


Step 8: Cable Management Installation



Organize cables using the clip in the upper arm.
Pull the lower cover out as shown, run cables through the lower arm and reattach the cover. Use the clamp shell to manage the wrenches when not used.

Step 7: Tilt & Swivel & Rotation Adjustment



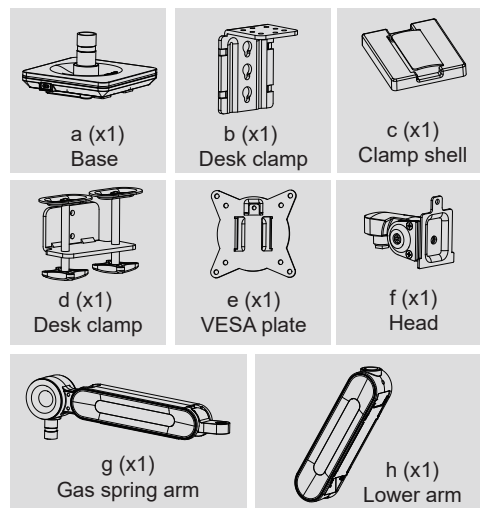
Use hex wrenches to adjust the damp for Tilt , Swivel and Rotation.

TOOLS REQUIRED NOT INCLUDED

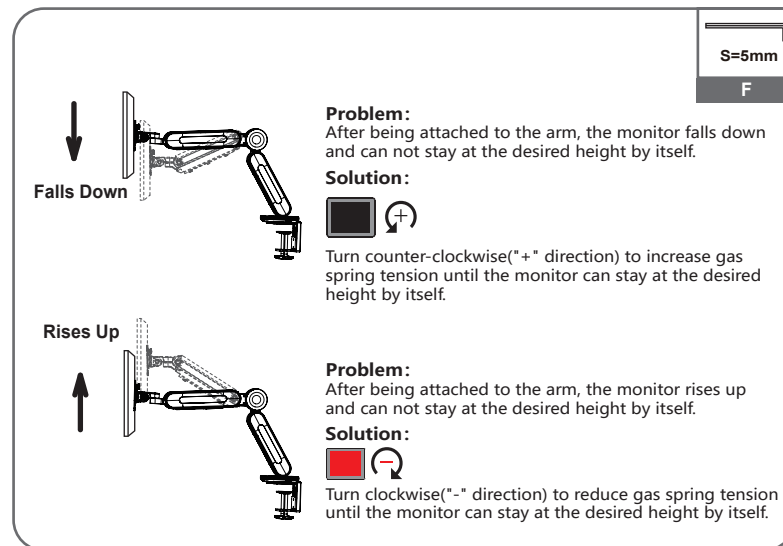
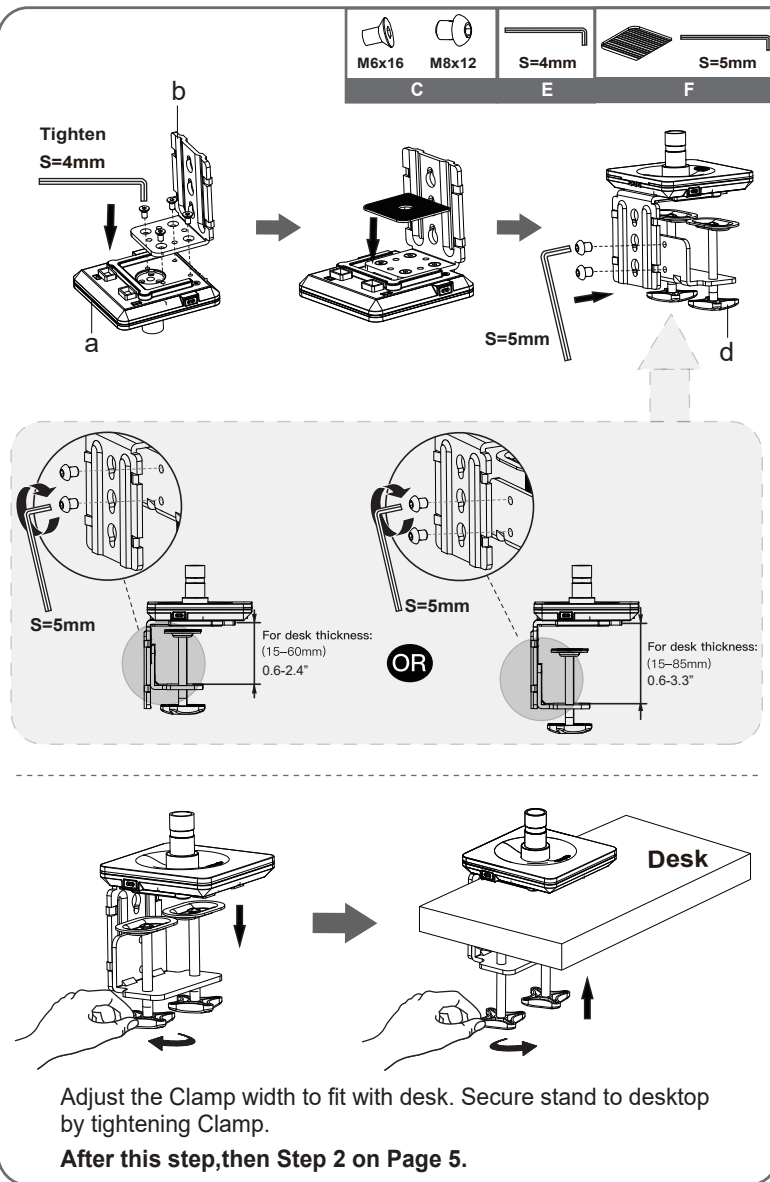


PARTS INCLUDED

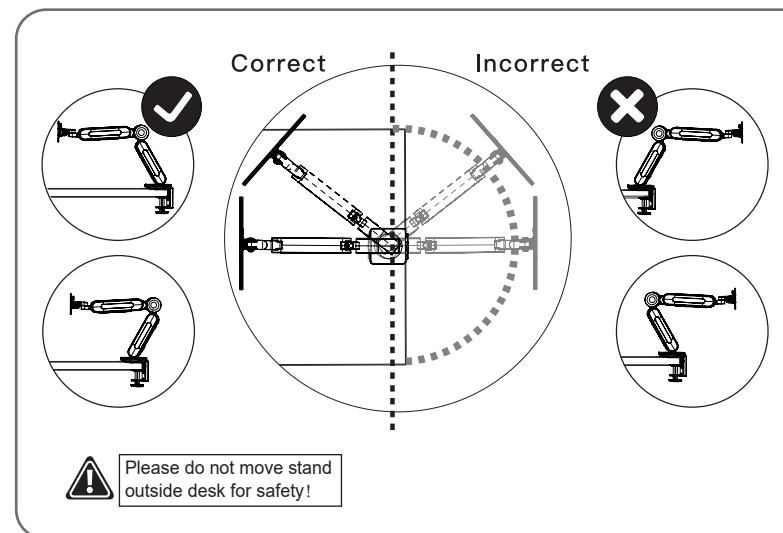
| | |
|---|--|
| A | M4x12 (x4) M4x25 (x4) M4x30 (x4) |
| B | 12x5.8x16 (x4) |
| C | M8x12(x2) M6x16 (x4) M4x5 (x1) |
| D | Cap(x1) Φ22.8x14.3x1.5(x1) M6x16(x1) (x1) |
| E | S=3mm (x1) S=4mm (x1) |
| F | (x1) S=5mm (x1) |



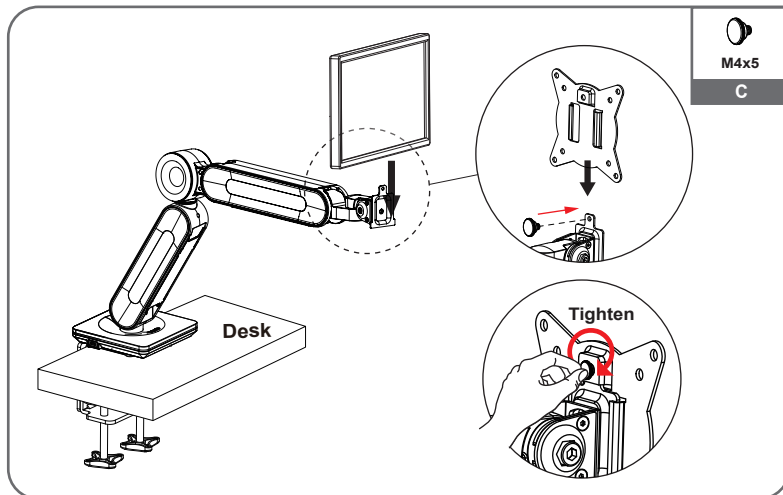
Step 1: Clamp Installation



Step 6 : Rotation Restriction

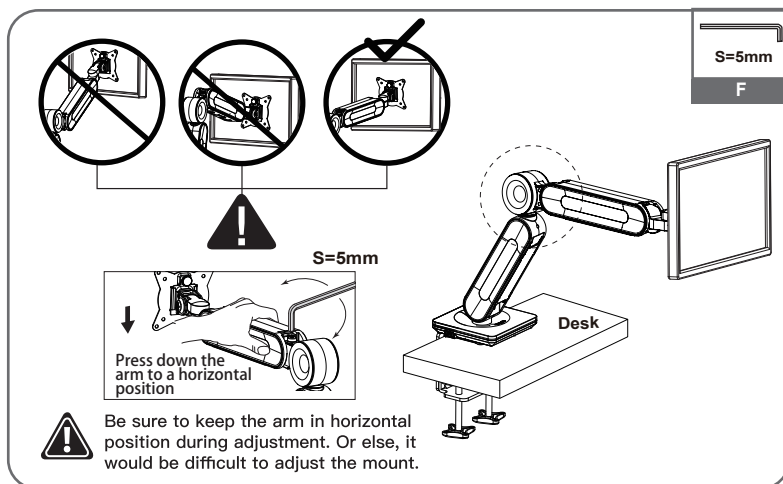


Step 4: Hang Monitor



Slide the monitor onto the head of swivel arm, install the security bolt (C). Make sure the security bolt is installed before you rotate the monitor.

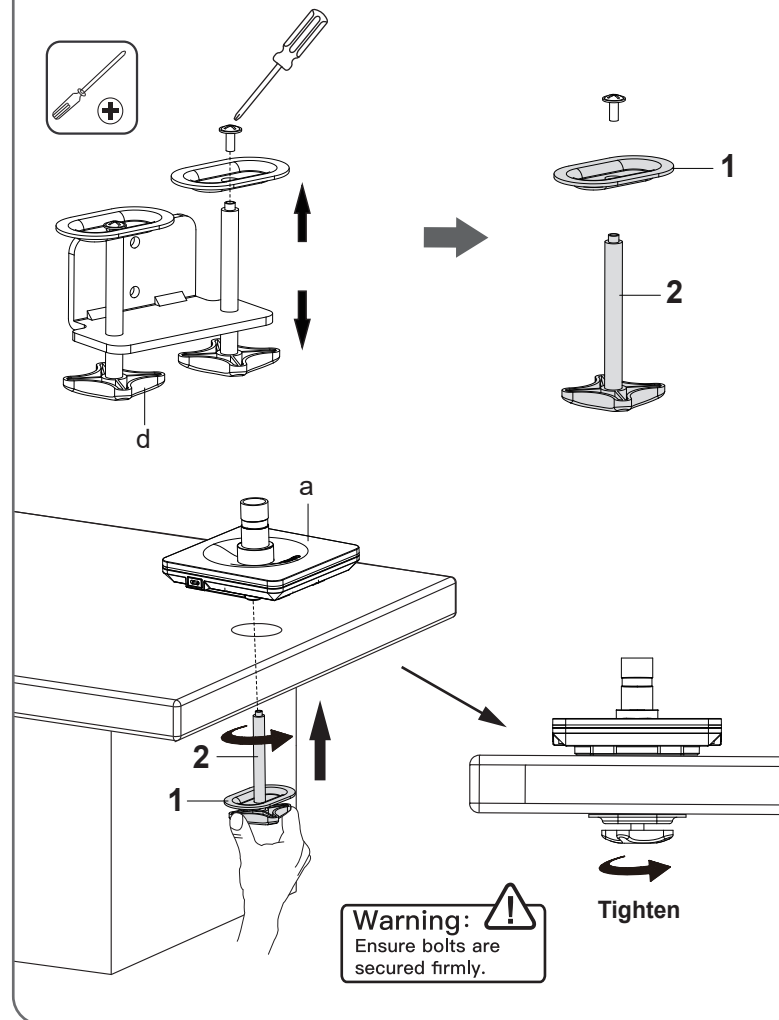
Step 5: Adjust Tension



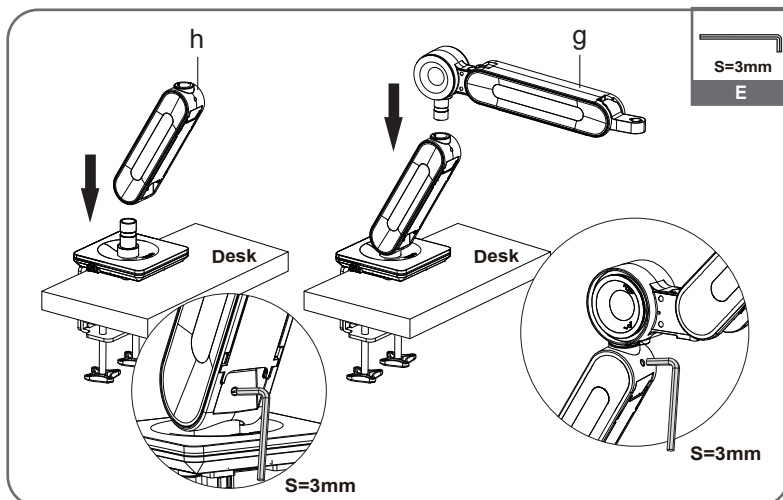
For proper functioning of this mount, depending on different weight of monitor you might need to adjust tension in the gas spring arm using 5mm hex wrench.

OR Step 1: Grommet Base Installation

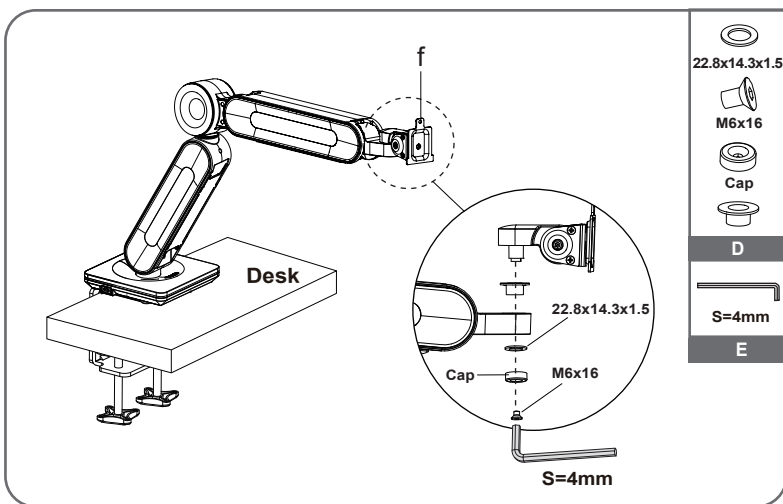
NOTE: If your desk has an existing grommet hole, remove plastic cover before installation. If there is no existing grommet hole, make a mark on your mounting surface, and use a drill to drill a hole (10-12mm) in the mounting surface.



Step 2 : Arm Installation



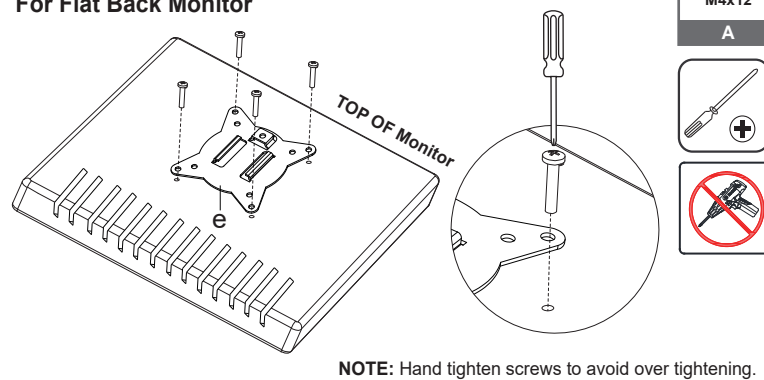
Install the lower arm to the base. Secure the arm by tightening the inside screw using 3mm Allen key. Insert the gas spring arm above the lower arm and fasten the screw in the front.



Attach the Head (f) to the gas spring arm and secure it.

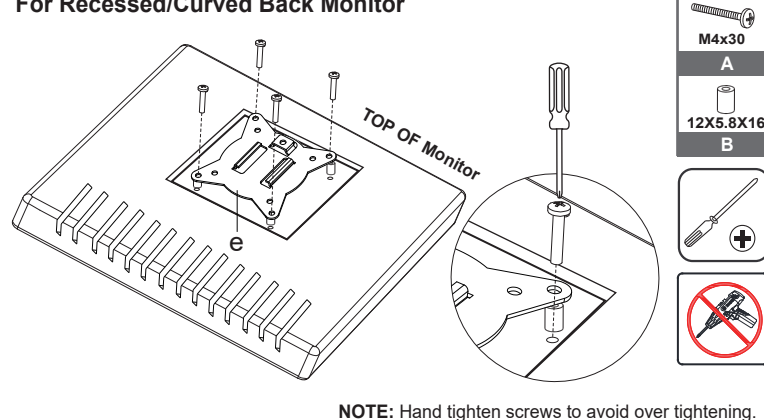
Step 3 : Attach Monitor

OPTION A: For Flat Back Monitor



Flat surface installation: Install 4 short screws through faceplate to monitor via mounting holes. Do not tighten the screws excessively or your monitor might be damaged.

OPTION B: For Recessed/Curved Back Monitor



Recessed/Curved surface installation: Put 4 spacers between faceplate and monitor. Install 4 long screws through faceplate, spacers to monitor via mounting holes. Do not tighten the screws excessively or your monitor might be damaged.